

Air Valves Air & Vacuum Release, Continuous and Combination

Product Information

Premium resins

Long lasting performance

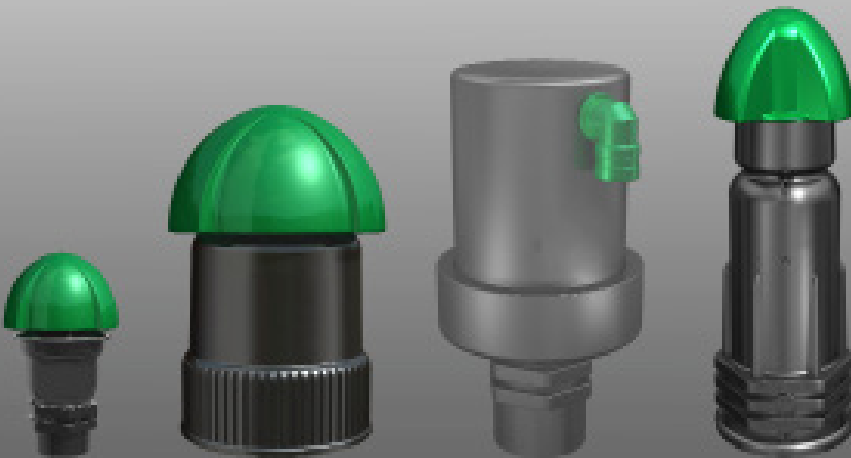
Three types of valves: Air& Vacuum, Automatic, and Combination

Key Operating Guidelines

Minimum working pressure: 0.10 bar

Maximum pressure: 10.0 bar (Air & Vacuum)

Maximum operating temperature: 60° C



The Rivulis line of air valves include an Air & Vacuum Release Valve, a Continuous Air Valve, and a Combination Air Valve. The air valves are recommended protection for drip and micro irrigation systems, helping to maintain proper hydraulic dynamics in the system design. Each type of air valve is design for a specific function. The Rivulis Air and Vacuum Release Valve is designed to allow large volumes of air to exit on during start up and enter during shut down of an irrigation system. The Rivulis Continuous Air Valve allows small amounts of trapped air in a pipeline under pressure to be released. The combination air valve does both applications.

Air Valves Air & Vacuum Release, Continuous and Combination

Air Valves -Application Table

Location in System	Air & Vacuum Release Valves	Continuous Air Valves	Combination Air Valves
Source			●
Pump stations	●		
Upstream of pump check valves			●
On filter inlet manifolds	●		
On filter backflush manifolds			
System Head			●
At all high points		●	●
Before water meters			
Distribution Network		●	●
At all high points		●	●
Every 1,300 feet			●
At the top of downhill sloping pipes	●		
At the end of long distribution pipes			●
Upstream of on/off field control valves			
Downstream of on/off field control valve	●		

Rivulis Air & Vacuum Release Valve

The Rivulis Air & Vacuum Release Valves are designed to reduce air related problems when the system starts and when it is shut down. The Air & Vacuum Release Valve discharges air during the system start up to provide a smooth, quick filling of the pipes while avoiding water hammer. These valves re-admit air to the distribution system during system shut down to prevent pipe collapse, and to help prevent suction of soil into the emission device.

Rivulis Air & Vacuum valves are designed to remain open even with high air pressure to fully exhaust a pipe at startup, and to completely seal at very low water pressure.



Air & Vacuum Release Valve 1"



Air & Vacuum Release Valve 2"



Air & Vacuum Release Valve 3"

Advantages of Rivulis Air Vacuum Release Valves

- Remain open to discharge air from a system without closing prematurely. Will function under air pressures up to 8 psi.
- Closes and remain drip-tight when water enters the system – even with water pressures as low as 3 psi.
- Lightweight, durable and compact; suitable for both metal and plastic pipes.

Product Information

Material Properties: Corrosion resistant, UV Protection

Sizes: 3/4" and 1" (MPT), 2" and 3" (FPT)

Key Operating Guidelines

Minimum pressure: 0.15 psi

Maximum pressure: 150 psi

Air Valves Air & Vacuum Release, Continuous and Combination

Rivulis Continuous Air Valve and Combination Air Valves

Rivulis Air Valves with the continuous release function allow air to escape the treatment and distribution system while the system is pressurized. Most commonly the Rivulis Combination Air Valve is used, which also has the function of allowing air to be expelled as the system starts up, and air to enter the system at shut-down.

Rivulis Air Valves - Product and Ordering Information

Item Number	Product Description	Connection Diameter (inch)	Thread Type	Height (inch)	Width (inch)	Outlet Connection	Weight (lb)
101045528	Air & Vacuum Release Valve	3/4	MPT	4.9	2.4		0.1
101045530	Air & Vacuum Release Valve	1	MPT	4.9	2.4		0.1
101045532	Air & Vacuum Release Valve	2	FPT	4.8	2.9		0.2
101045680	Air & Vacuum Release Valve	3	FPT	6.5	4.1		0.6
WT12513	Continuous Air Valve	1	MPT	5.5	3.9	1/8" FPT	0.3
WT12519	Combination Air Valve	1	MPT	5.6	3.9	3/8" FPT	0.3
WT12521	Combination Air Valve	2	FPT	9.6	2" FPT	0.8	



Continuous Air Valve 1"

Combination Air Valve 1"

Combination Air Valve 2"

Advantages of Rivulis 2" Combination Air Valves

- Remains open to discharge air from a system without closing pre-maturely. Will function under air pressures up to 8 psi.
- Closes and remain drip-tight when water enters the system, even with water pressures as low as 1.5 psi
- One piece float and seal assembly allows easy, simple servicing
- Threaded outlet to vent water away from distribution piping
- Lightweight, durable and compact; suitable for both metal and plastic pipes & treatment components.

Product Information

Product Information

Material Properties: Corrosion resistant, UV Protection

Sizes: Continuous - 1" (MPT), Combination - 1" (MPT) and 2" (FPT)

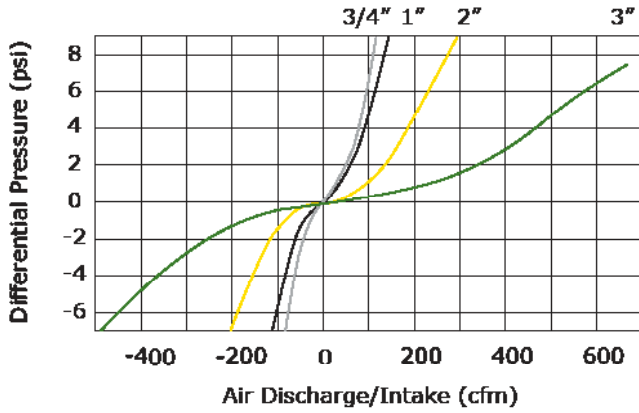
Key Operating Guidelines

Minimum pressure: 1.5 psi

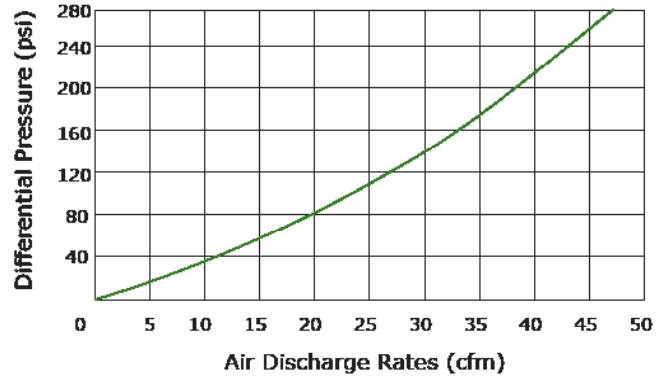
Maximum pressure: 150 psi

Rivulis Air Valves - Air Discharge Graphs

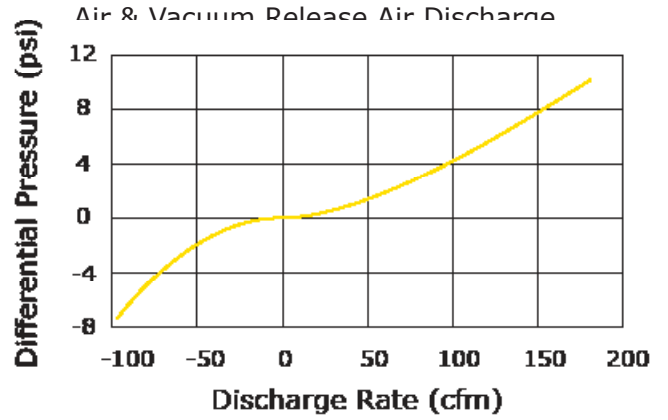
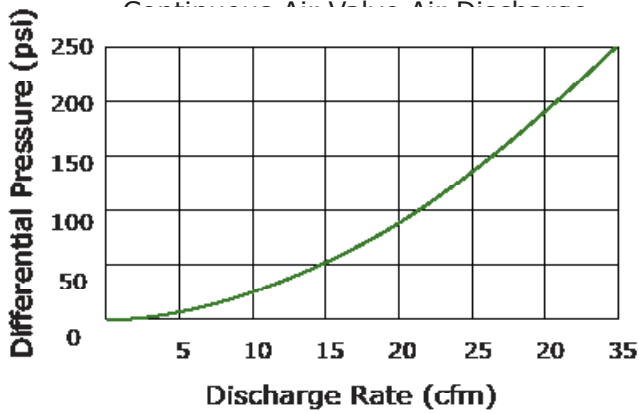
Air & Vacuum Release Valve
Discharge Rate - 3/4", 1", 2", 3" Models



Continuous Air Valve
Discharge Rate- 1" Model



Combination Air Valve - 1" Models



Combination Air Valve - 2" Models

